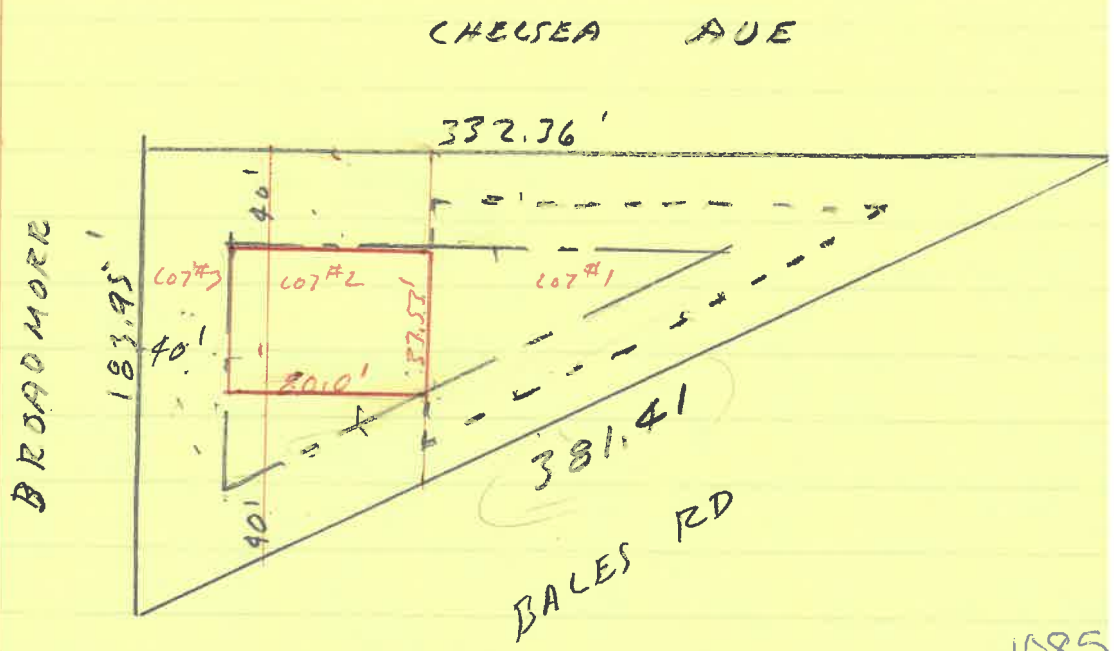


LOTS 1, 2 & 3
 WESTWOOD ADDITION
 P.D. DISTRICT

11-4

SETBACKS F. 40
 S. 10'
 R. 10'

PARKING FROM R.O.W. 20' GREEN B
 $37.53' \times 80.0' = 3002.4' \div 125 = 24 P$



1085
 Chels